



# User Manual

## U.S. Cellular Home Phone

DWR-920V

---

# Preface

D-Link reserves the right to revise this publication and to make changes in the content hereof without obligation to notify any person or organization of such revisions or changes.

## Manual Revisions

Revision	Date	Description
1.0	March 27, 2019	• Initial release for U.S.

## Trademarks

D-Link and the D-Link logo are trademarks or registered trademarks of D-Link Corporation or its subsidiaries in the United States or other countries. All other company or product names mentioned herein are trademarks or registered trademarks of their respective companies.

Copyright © 2018 by D-Link Corporation, Inc.

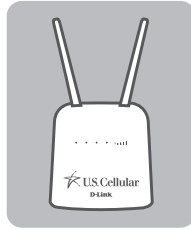
All rights reserved. This publication may not be reproduced, in whole or in part, without prior expressed written permission from D-Link Corporation, Inc.

# Table of Contents

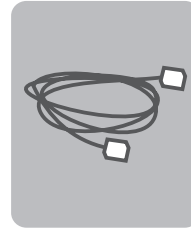
<b>Product Overview.....</b>	<b>1</b>	<b>How to Use Your Device.....</b>	<b>26</b>
Package Contents.....	1	<b>Troubleshooting .....</b>	<b>28</b>
System Requirements .....	2	<b>Technical Specifications .....</b>	<b>29</b>
Introduction .....	3	<b>Regulatory Information .....</b>	<b>30</b>
Hardware Overview .....	4		
Overview.....	4		
LED Indicators .....	5		
Power Bank .....	6		
<b>Installation .....</b>	<b>7</b>		
<b>Advanced Setup.....</b>	<b>9</b>		
Navigation.....	10		
Quick Access.....	11		
Call Info .....	12		
Call Timer .....	12		
Black List & White List.....	13		
SMS .....	15		
Short Messages .....	15		
System .....	18		
System Information .....	18		
Admin Settings.....	19		
Settings Profile.....	22		
Firmware Upgrade.....	24		
Help .....	25		

# Product Overview

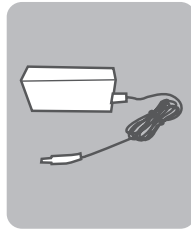
## Package Contents



DWR-920V  
U.S. Cellular Home Phone +  
Preinstalled SIM/UICC Card



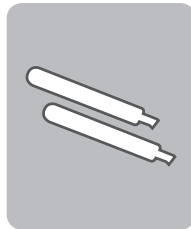
Ethernet Cable



12V 1A Power adapter  
+ Power Bank



Telephone Cable



2 x 4G Blade Antennas

If any of these items are missing or damaged, please contact your reseller.

# System Requirements

<b>Network Requirements</b>	<ul style="list-style-type: none"><li>• A compatible mini-SIM/UICC card with mobile data service<sup>1</sup></li></ul>
<b>Web-based Configuration Utility Requirements</b>	<p><b>Computer with the following:</b></p> <ul style="list-style-type: none"><li>• Windows®, Macintosh, or Linux-based operating system</li></ul> <p><b>Browser Requirements:</b></p> <ul style="list-style-type: none"><li>• Internet Explorer 9 or higher</li><li>• Firefox 12 or higher</li><li>• Safari 4 or higher</li><li>• Chrome 20 or higher</li></ul> <p><b>Windows® Users:</b> Make sure you have the latest version of Java installed. Visit <a href="http://www.java.com">www.java.com</a> to download the latest version.</p>

<sup>1</sup> Subject to services and service terms available from your carrier.

# Introduction

## **SIMPLE AFFORDABLE HOME PHONE SERVICE**

The U.S. Cellular Home Phone is a simple-to-use and affordable alternative for home phone service and connects to any corded or cordless touch-tone telephones. Simply plug any touch-tone telephone into the U.S. Cellular Home Phone and you will get all the benefits of a land line without the high price. Make and receive calls from your home phone using the U.S. Cellular wireless network.

## **ALWAYS STAY CONNECTED WITH A BACKUP POWER BANK**

With a backup power bank, you can stay connected if the power goes out or if you take your U.S. Cellular Home Phone to a location that does not have a power outlet.

## **SIMPLE TO INSTALL AND USE**

The U.S. Cellular Home Phone can be installed quickly and easily almost anywhere. Its user friendly LED indicators make it easy to know when you have a waiting voicemail or when you've received a SMS message.

# Hardware Overview

## Overview



1	<b>SIM/UICC Card Slot</b>	Insert a SIM/UICC card to access the Internet and your SIM/UICC card contacts list.
2	<b>Reset Button</b>	Using a paper clip, press and hold this recessed button for 10 seconds to reset the device to default.
3	<b>LED Indicators</b>	Status display. Please refer to <b>LED Indicators</b> on page 5.
4	<b>Power Button</b>	Press this button to power on/off the device.
5	<b>Power Input</b>	Receptacle for the included power bank.
6	<b>LAN</b>	Use an Ethernet cable to connect a device to your U.S. Cellular Home Phone and your network.
7	<b>Phone</b>	Connect a phone here that uses a regular phone line.

# Hardware Overview

## LED Indicators

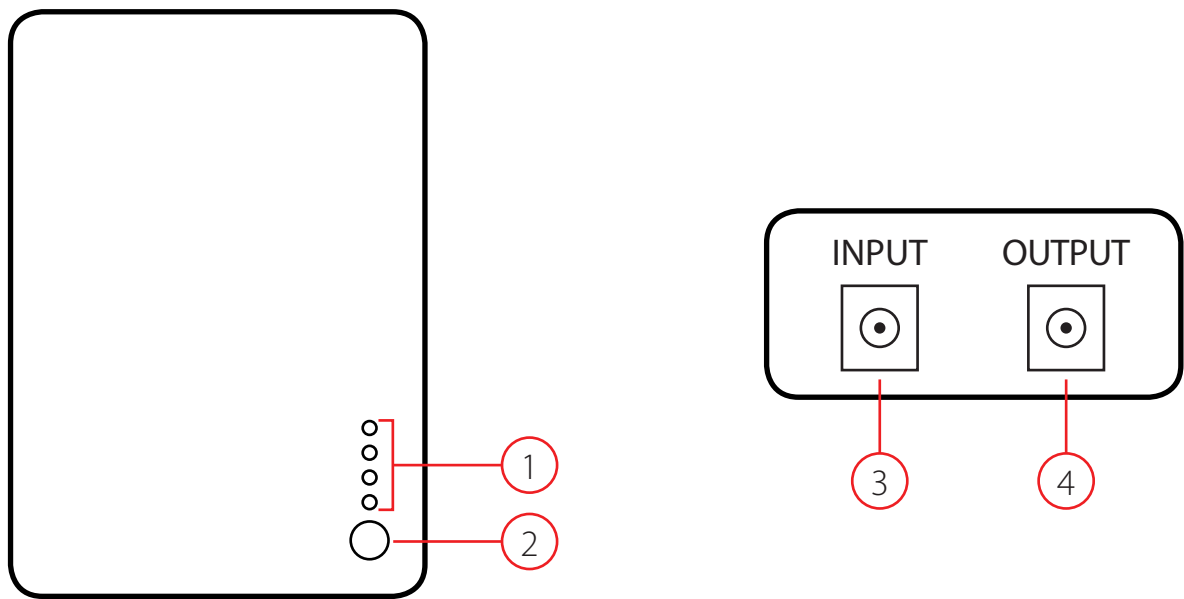


1	Voicemail	Solid Green	New unread voicemail/s
		Off	No new voicemail/s
2	Power	Solid Green	Device is powered on
		Off	Device is powered off
3	SMS	Solid Green	New unread short message/s
		Off	No new short message/s
4	Telephone	Solid Green	Registered to IMS network and ready for voice calls
		Solid Blue	Voice call in progress
		Solid Red	Failed IMS registration
		Blinking Red	No SIM/UICC card detected or invalid SIM/UICC card
5	Signal Strength	Blinking Red	Indicates signal strength



# Hardware Overview

## Power Bank



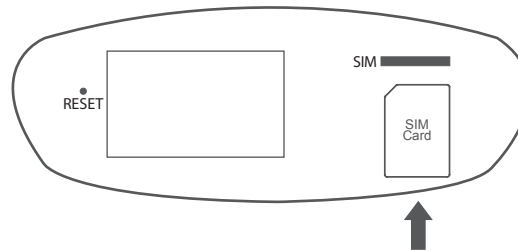
1	Power LED Indicators	Sequential LED's to indicate the percentage of battery left in the power bank.
2	Power LED Indicator Button	Press this button to light up the Power LED Indicators.
3	Input	Receptacle for the power adapter.
4	Output	Receptacle for the DC connector.

# Installation

This section will guide you through the installation process. Placement of the device is very important. Do not place the DWR-920V U.S. Cellular Home Phone in an enclosed area such as a closet, cabinet, or in an attic or garage. Ensure that your DWR-920V U.S. Cellular Home Phone is powered off before performing the steps below.

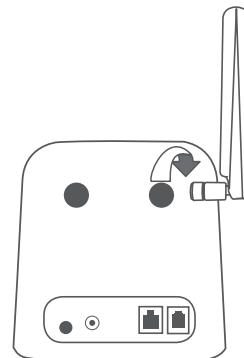
## Step 1

Verify that your SIM/UICC card is installed and has been activated by your carrier. If it has not been installed, follow the diagram next to the slot at the bottom of the DWR-920V. Push gently until it locks into place.



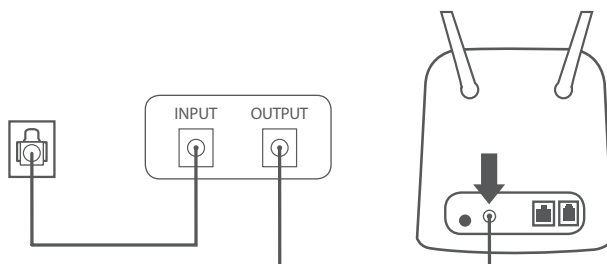
## Step 2

Attach the included antennas to the back of the device, screwing them in clockwise. Arrange the antennas so that they point upwards.



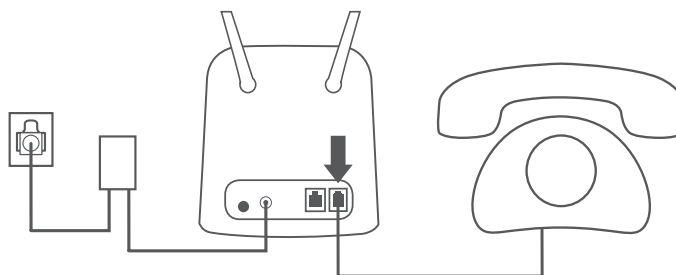
### Step 3

Using the DC connector cable, connect one end to the OUTPUT socket of the power bank and the other end to the power input socket of the DWR-920V. Connect the power adapter to INPUT socket of the power bank and the other end into a wall outlet or power strip.



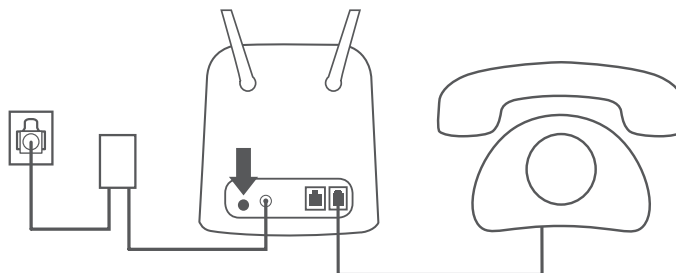
### Step 4

To connect the device to a phone, please plug your telephone into the “Phone” port on your U.S. Cellular Home Phone, using your existing phone cable or the included phone cable.



### Step 5

Press the power button to turn on the device. The power LED will light up green to indicate that power is being supplied. After a few moments, the LED indicators will show the current status of the DWR-920V's various functions.

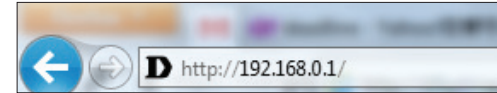


# Advanced Setup

Once connected to your U.S. Cellular Home Phone, open a web browser and enter the IP address **http://192.168.0.1** into a browser's address field.

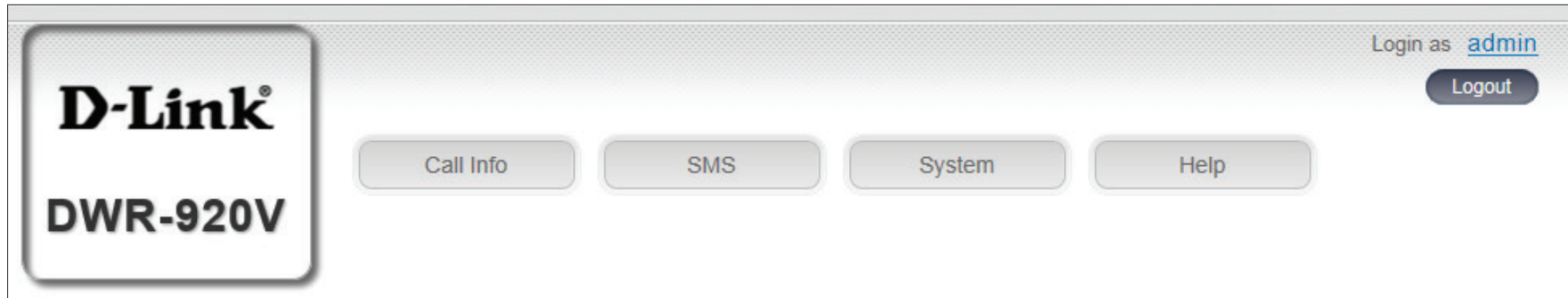
Log in using the username "**admin**" and leave the password field blank. Click **Sign in** to continue.

After logging in, you can access the WebGUI for features such as SMS messaging and voicemail.

A screenshot of the D-Link login page. At the top left is the 'D-Link' logo. Below it, a blue bar contains the text 'Welcome to D-Link'. The main area contains two input fields: the first is labeled 'User Name' with a placeholder 'Enter Username', and the second is labeled 'Password' with a placeholder 'Enter Password'. Below these fields is a blue 'Sign in' button.

# Navigation

On the home page of the advanced settings interface, you will find a menu bar at the top of the page which includes tabs for easy navigation.



**Call Info** The **Call Info** tab gives you the telephone records and an inventory to black or white list phone numbers.

**SMS** From the **SMS** tab, you can send and receive SMS text messages.

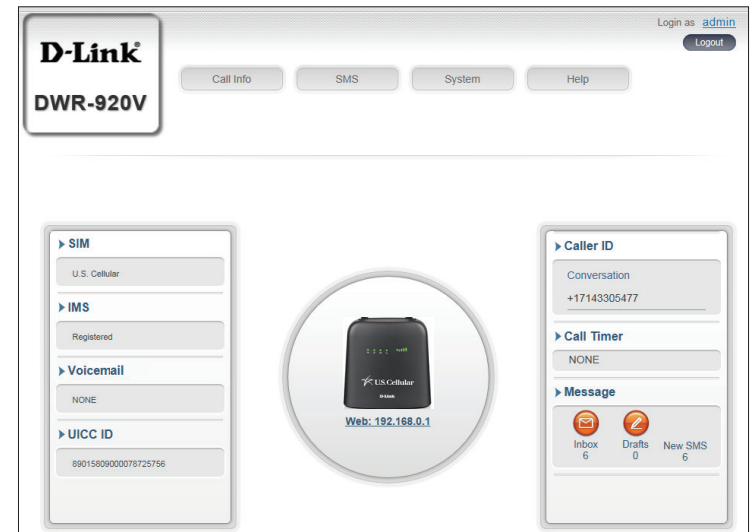
**System** The **System** tab allows you to view system information, change your login information, configure your settings profiles and upgrade the firmware.

**Help** The **Help** tab provides you with information for troubleshooting your device.

# Quick Access

A quick access page will be displayed on the initial home page for the DWR-920V.

- SIM** The phone number tied to your SIM card.
- IMS** The IP Multimedia Subsystem ID.
- Voicemail** This area displays the number of voicemail messages received by the device.
- UICC ID** The ID tied to your SIM/UICC card.
- Caller ID** The caller ID of the person you are connected to during a phone call.
- Call Timer** Counter for an ongoing call.
- Message** This area displays the number of SMS messages in your inbox and your draft messages.



# Call Info

## Call Timer

This page gives you a telephone record history for the DWR-920V.

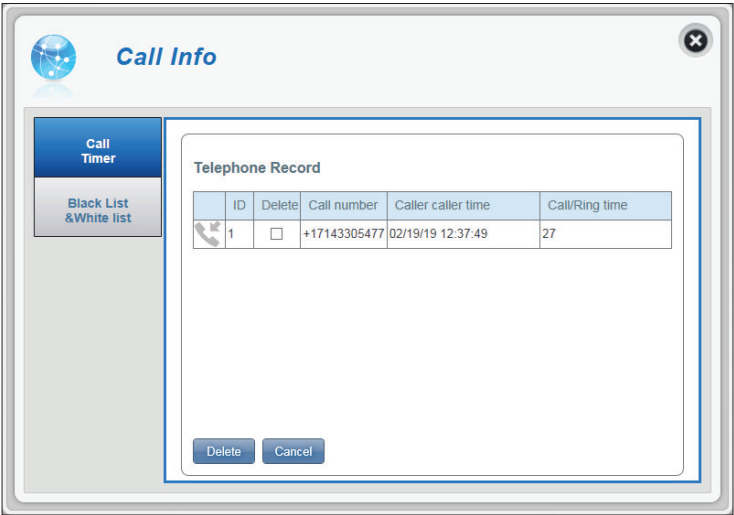
**ID** A chronological number given to each call you receive.

**Delete** Check this box to select and delete a call log in your telephone record.

**Call number** The caller’s number.

**Caller Time** The time that the call was received.

**Call/Ring Time** The time that the call took (in seconds).



## Black List & White List

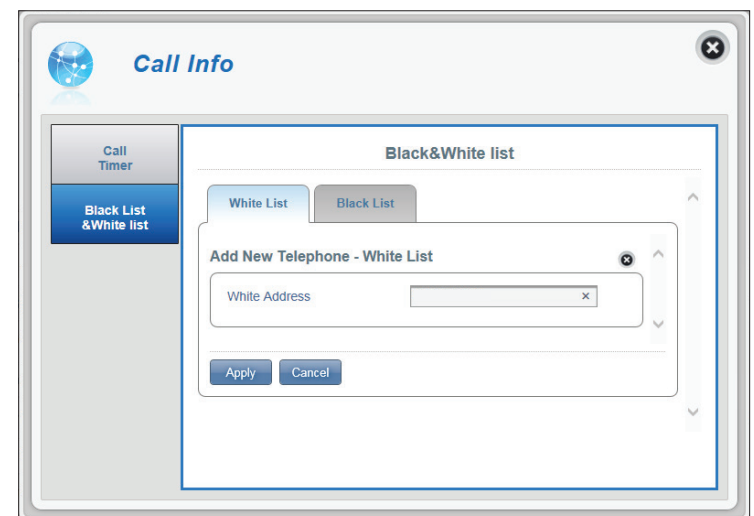
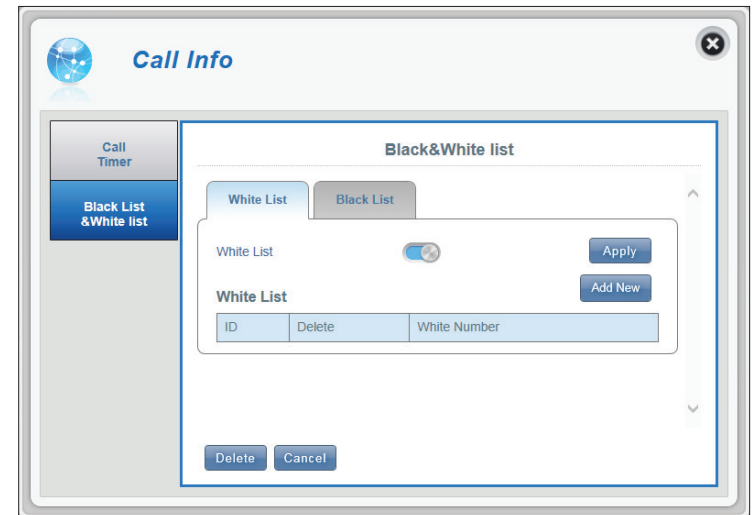
This page gives you an inventory to black or white list phone numbers. The White List is a list of numbers that will be approved to connect to your number - all other numbers will be denied access, except those included in the White List. The Black List is the reverse of White List.

### WHITE LIST

- White List** Click the toggle to **Enable** or **Disable** the White List feature.
- Apply** Click **Apply** to save the settings for enabling or disabling the White List feature.
- Add New** Click **Add New** to add a number to the White List.
- ID** A chronological number given to each White Listed number.
- Delete** Check this box to select and delete White Number.
- White Number** The White Listed number.

### ADD NEW

- White Address** Enter the number you would like to White List here.



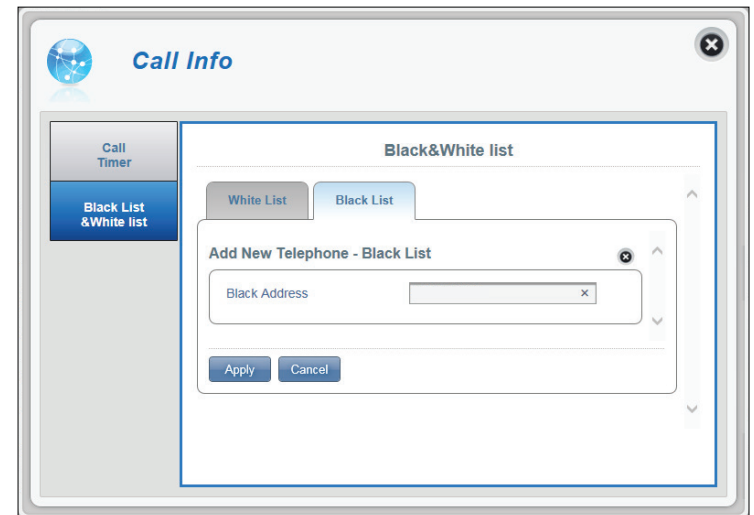
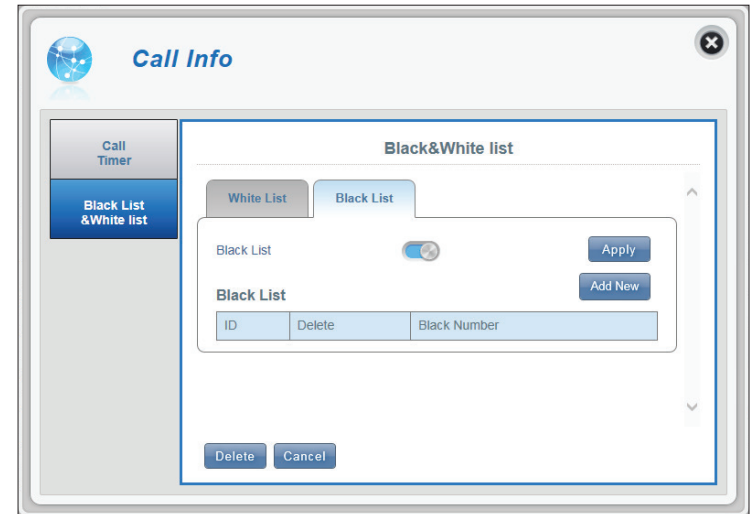


## BLACK LIST

- Black List** Click the toggle to **Enable** or **Disable** the Black List feature.
- Apply** Click **Apply** to save the settings for enabling or disabling the Black List feature.
- Add New** Click **Add New** to add a number to the Black List.
- ID** A chronological number given to each Black Listed number.
- Delete** Check this box to select and delete Black Number.
- Black Number** The Black Listed number.

## ADD NEW

- Black Address** Enter the number you would like to Black List here.



# SMS

## Short Messages

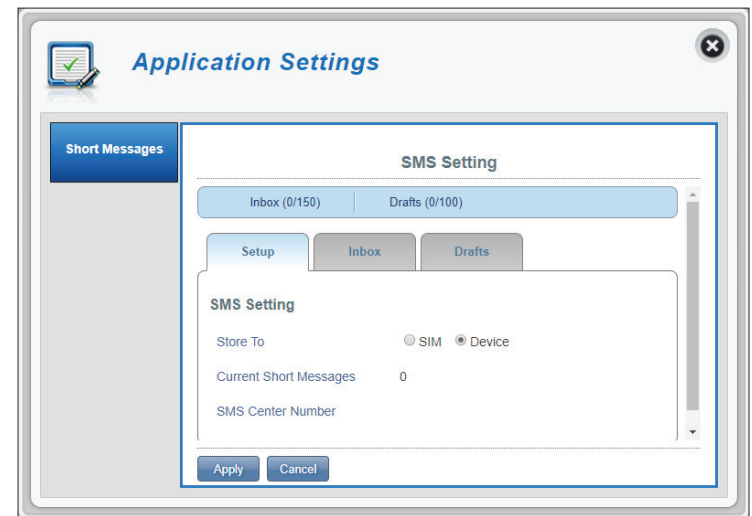
On the Short Messages page you can organize, send and receive Short Message Service (SMS) messages by selecting between the **Setup**, **Inbox** and **Drafts** tab. These messages can either be saved to the DWR-920V's internal memory or on the SIM/UICC card itself. Click **Apply** to save changes.

### SETUP

**Store To** Choose between the location to store contact numbers, either on your SIM/UICC card or the DWR-920V device.

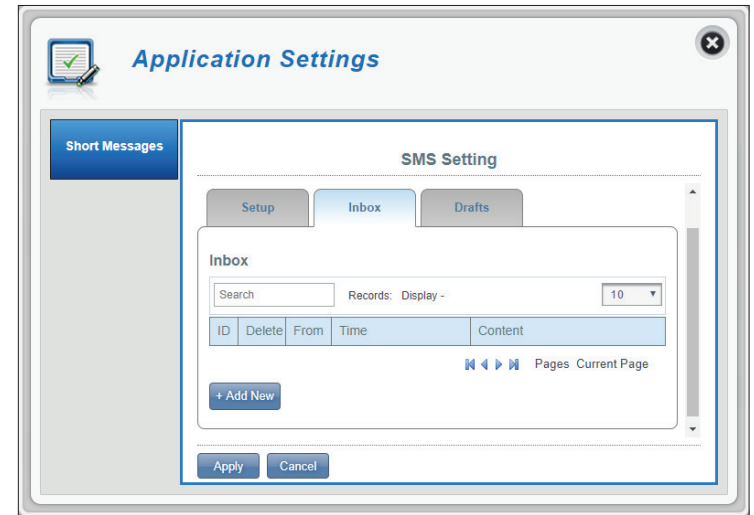
**Current Short Messages** The current number of messages received.

**SMS Center Number** Your SIM/UICC card's contact number.



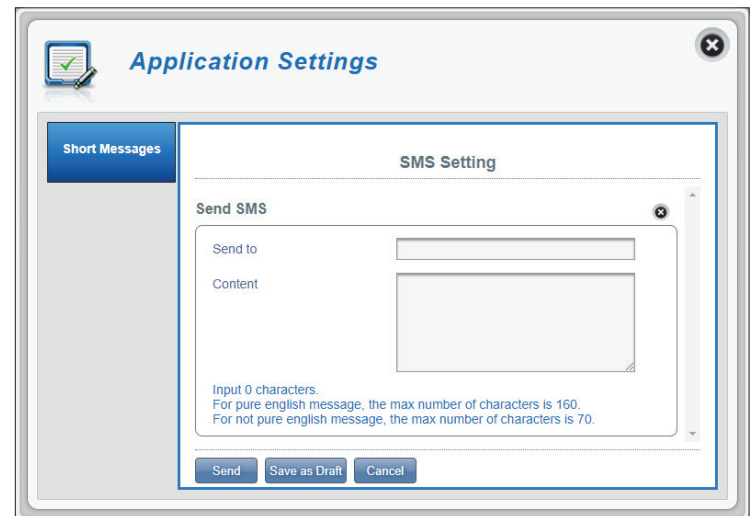
## INBOX

- ID** A chronological number given to each message you receive.
- Delete** Check this box to select and delete a message in your inbox.
- From** The SMS sender's number.
- Time** The time the message was received.
- Content** The SMS message's content.
- Add New** Click **Add New** to send a new message.



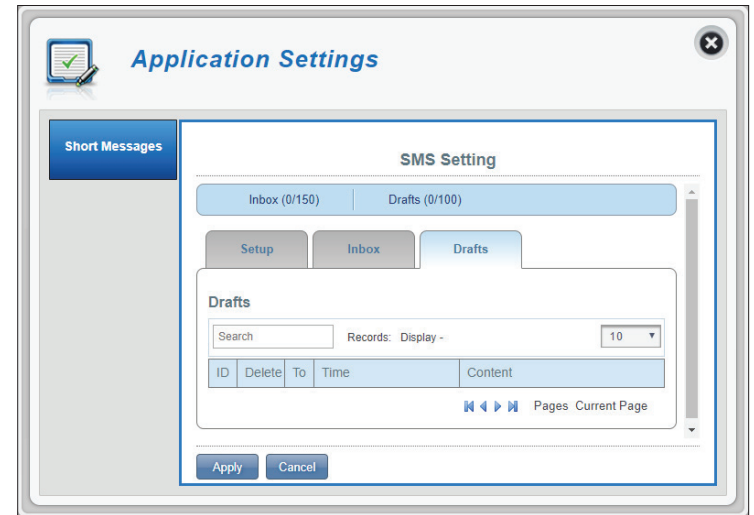
## + ADD NEW

- Sent to** Enter the phone number of the intended recipient here.
  - Content** Type your message content here.
- Click **Send** to send your message. Click **Save as Draft** to save the message as a draft and send it later.



## DRAFTS

- ID** A chronological number given to each message you save to drafts.
- Delete** Check this box to select and delete a message in your drafts folder.
- To** The SMS recipient's number.
- Time** The time the message was last edited.
- Content** The SMS message's content.



# System System Information

## ABOUT DWR-920V

**FW Version** The current firmware version of the DWR-920V.

**Hardware Version** The current hardware version of the DWR-920V.

**IMEI** An International Mobile Equipment Identity is a unique number assigned to every mobile device.

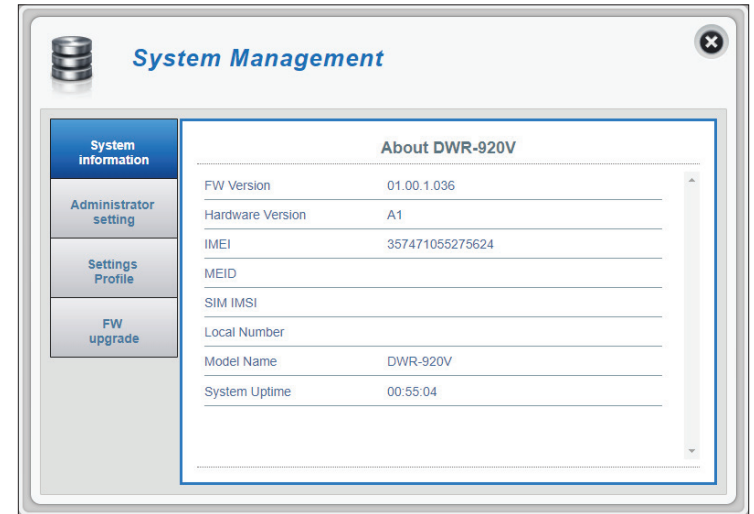
**MEID** A Mobile Equipment Identifier is a unique number assigned to every mobile device.

**SIM IMSI** The SIM card has a unique number called an International Mobile Subscriber Identity (IMSI). This is used to identify and authenticate users on cellular devices.

**Local Number** The phone number tied to your SIM card.

**Model Name** The model number of your D-Link device.

**System Uptime** The length of time since the last restart.

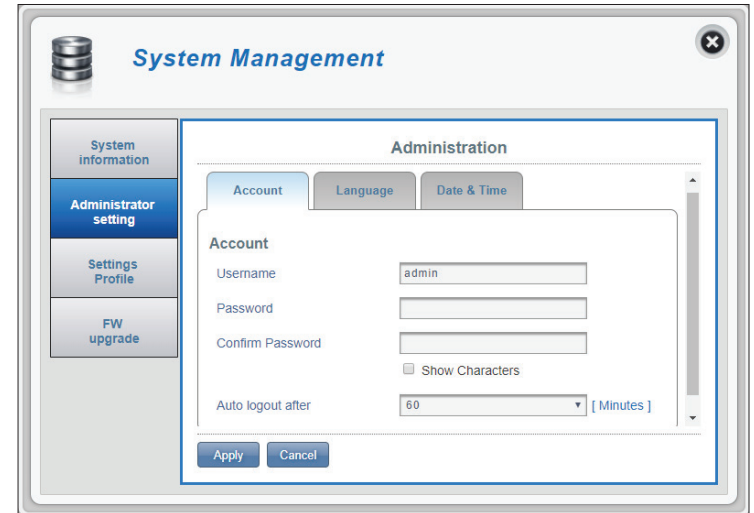


# Admin Settings

This section allows you to customize your administrator settings, change the device interface's language and adjust the date and time settings for the DWR-920V. Click **Apply** to save changes.

## ACCOUNT

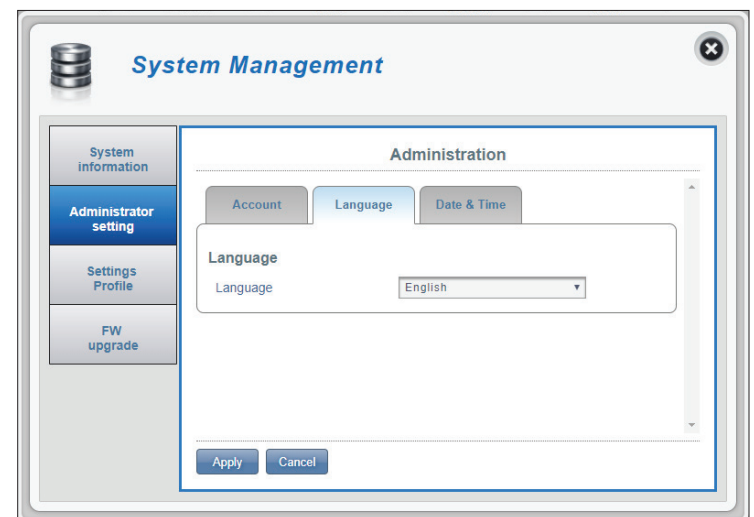
- Username** Adjust your login username.
- Password** Enter your new password.
- Confirm Password** Confirm the new password.
- Auto logout after** Click the drop-down arrow to select the length of time (in minutes) before being automatically logged out of the interface.



The screenshot shows the 'System Management' window with the 'Administration' section selected. The 'Account' tab is active, displaying fields for 'Username' (set to 'admin'), 'Password', 'Confirm Password', and 'Auto logout after' (set to '60' minutes). There is a 'Show Characters' checkbox and 'Apply' and 'Cancel' buttons at the bottom.

## LANGUAGE

- Language** Select your desired language for the device interface here.



The screenshot shows the 'System Management' window with the 'Administration' section selected. The 'Language' tab is active, displaying a 'Language' dropdown menu set to 'English'. There are 'Apply' and 'Cancel' buttons at the bottom.

## DATE & TIME (SNTP ENABLED)

<b>SNTP</b>	Click the toggle to <b>Enable</b> or <b>Disable</b> automatic time synchronization with a Simple Network Time Protocol (SNTP) server.
<b>Primary, Secondary and Tertiary SNTP Server</b>	Enter a SNTP server address which will be used to synchronize the device's time and date.
<b>Time Zone</b>	Select your current Coordinated Universal Time Zone (UTC).
<b>Synchronization Cycle</b>	You can specify in hours how frequently the DWR-920V will update the time from the SNTP server.
<b>Selected Date and Time</b>	Reflects the current date and time of the device per the settings.
<b>Daylight Savings</b>	Select <b>Enable</b> if your region observes daylight savings.
<b>Start Date</b>	Enter the details of your region's daylight savings start date.
<b>End Date</b>	Enter the details of your region's daylight savings end date.

## DATE & TIME (SNTP DISABLED)

**SNTP** Click the toggle to **Enable** or **Disable** automatic time synchronization with a Simple Network Time Protocol (SNTP) server.

**Time Zone** Select your current Coordinated Universal Time Zone (UTC).

**Date & Time** Displays your new adjusted time.

**Selected Date and Time** Reflects the current date and time of the device per the settings.

**Daylight Savings** Select **Enable** if your region observes daylight savings.

**Start Date** Enter the details of your region's daylight savings start date.

**End Date** Enter the details of your region's daylight savings end date.

**System Management**

**Administration**

Account Language **Date & Time**

**Date & Time**

SNTP ☐

Time Zone: UTC-6

Date & Time: MM DD YYYY HH MM AM/PM  
02 06 1980 07 18 PM

Selected Date and Time: 1980-01-05 07:18 PM

Daylight Saving: ☐

Start Date: Third Sunday of April at 2 o'clock

End Date: Last Sunday of October at 2 o'clock

Apply Cancel



## Settings Profile

This section allows you to import or export configuration profiles and reset your device. Click **Apply** to save changes.

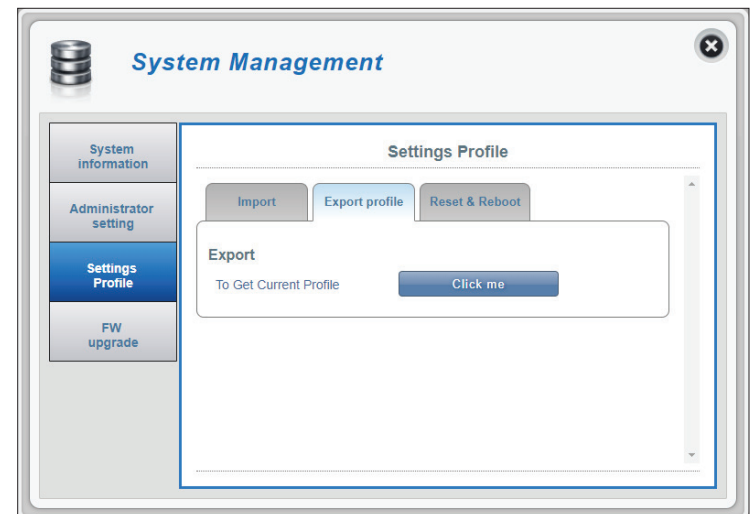
### IMPORT

**Select** Browse your computer for previously exported settings. Click **Apply Import** to upload the settings to your device.



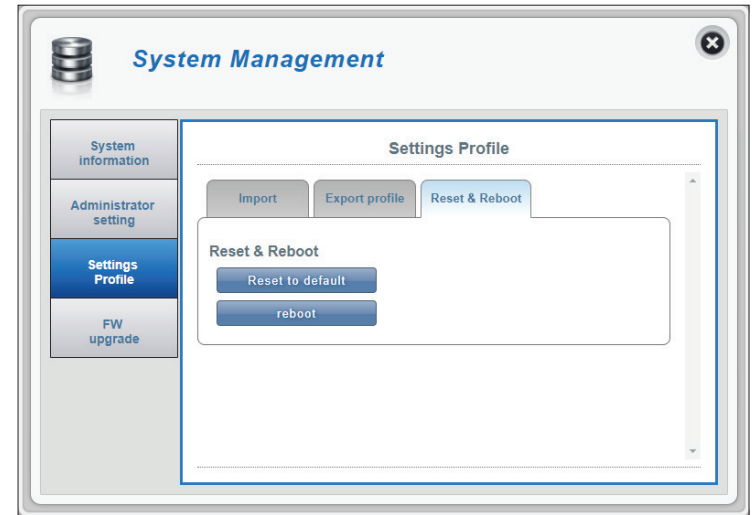
### EXPORT PROFILE

**To Get Current Profile** Click the **Click Me** button to download the current settings of your DWR-920V.



## RESET & REBOOT

- Reset to default** Select the **Reset to Default** button to reset the DWR-920V to factory default settings.
- Reboot** Select the **Reboot** button to reboot the DWR-920V.



# Firmware Upgrade

This page allows you to upgrade your DWR-920V's firmware manually or through the remote server.

## UPGRADE MY HOME PHONE (MANUAL)

### Upgrade My Home Phone

Select **Manual** from the drop down menu to manually upgrade your DWR-920V's firmware.

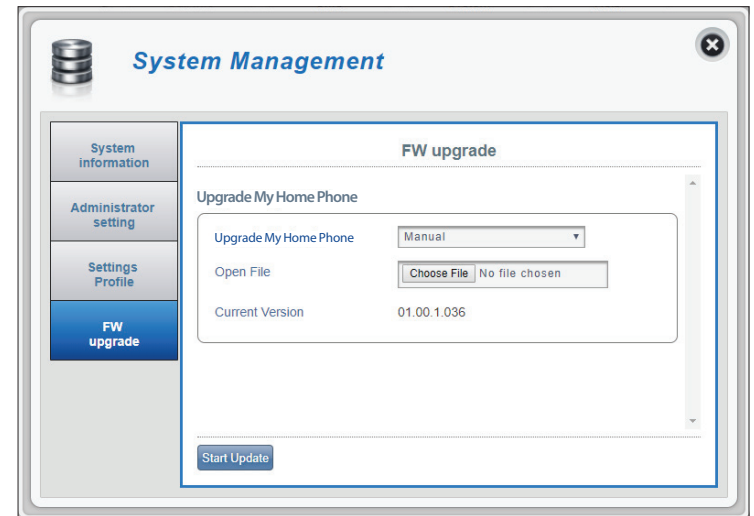
### Open File

If you have selected manual upgrade, click **Choose File** and select the appropriate file for the upgrade.

### Current Version

The current version of your firmware.

Click the **Start Update** button.



## UPGRADE MY HOME PHONE (REMOTE SERVER)

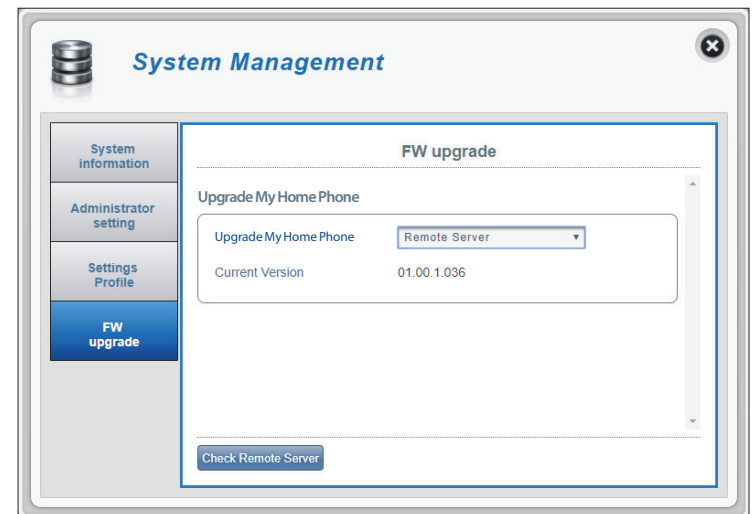
### Upgrade My Home Phone

Select **Remote Server** from the drop down menu to check and install any available firmware upgrades from the remote server.

### Current Version

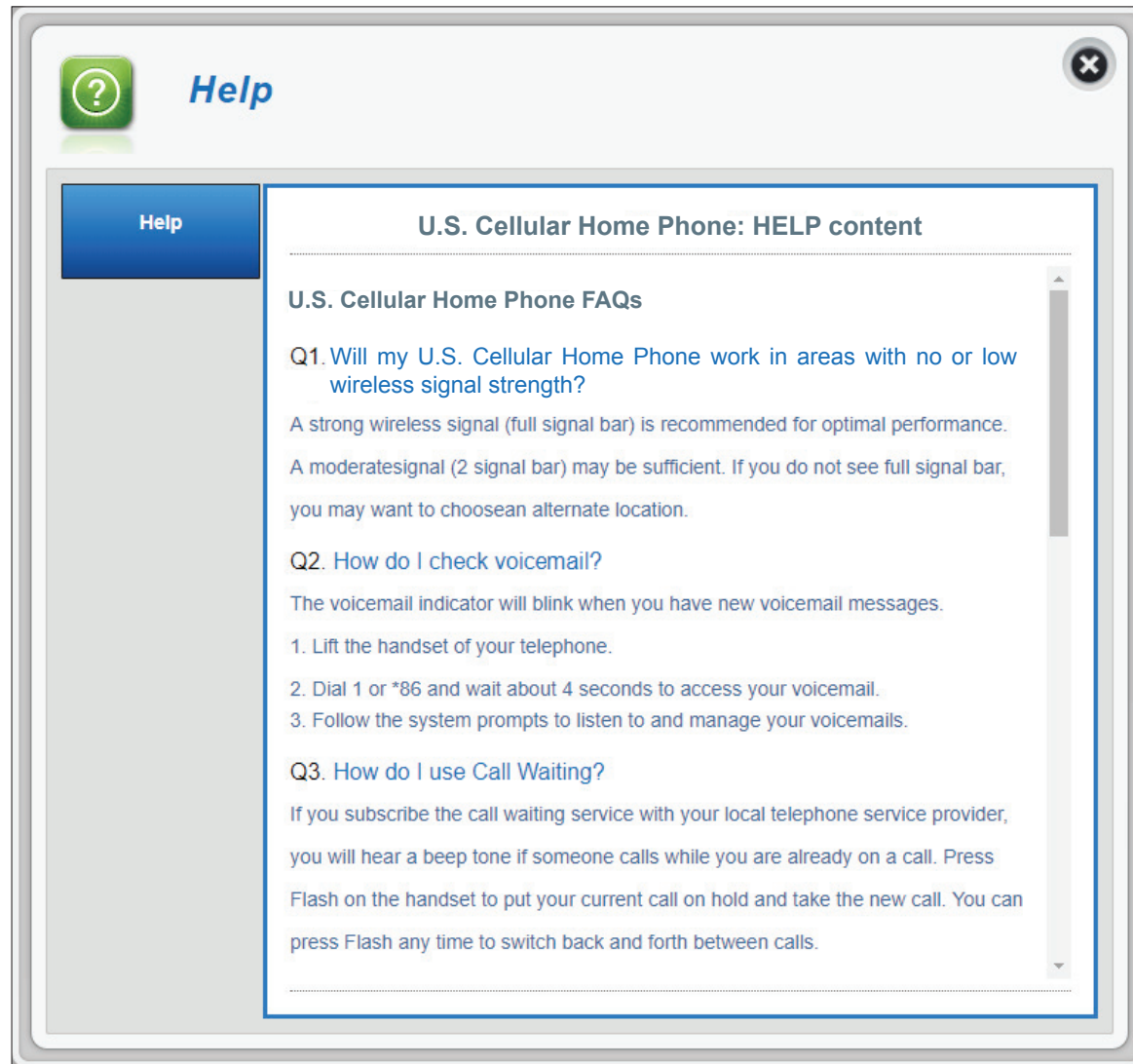
The current version of your firmware.

Click the **Check Remote Server** button.



# Help

This section provides answers for frequently asked questions regarding the DWR-920V U.S. Cellular Home Phone.



# How to Use Your Device

## Three-Way Phone Call

While on a current call, dial the second telephone number then press the **Flash** (recall) key.

- If the second party answers, press the **Flash** key again to activate the three-way phone call.
- If the second party does not pick up the phone, press the **Flash** key twice to end the call and return to the original call.

**Note:** If your phone does not have a Flash key, use your phone's off-hook mechanism to perform this action.

## Voicemail

When you receive a new voicemail, the voicemail LED on your DWR-920V U.S. Cellular Home Phone will blink green.

1. Lift the handset of your telephone.
2. Dial **1** or **\*86** and wait for a few seconds to connect to the voicemail service
3. Follow the instructions to listen to and manage your voicemails.

## Call Waiting

If someone calls you while you are on a current call, you will hear a beep tone. To answer the new call, press the **Flash** key on your telephone to put your current call on hold. You can press the **Flash** key at any time to switch between calls.

## Call Forwarding

Use this feature to forward calls to another phone number.

	To Activate the Feature	To Deactivate the Feature
<b>Immediate Call Forwarding</b> Forwards calls to another phone number regardless of the situation	1. Pick up the telephone and dial <b>*72 phone number to forward to#</b> 2. The confirmation tone verifies that the feature is activated. 3. Hang up the telephone.	1. Pick up the telephone and dial <b>*720#</b> 2. The confirmation tone verifies that the feature is deactivated. 3. Hang up the telephone.
<b>Busy Call Forwarding</b> Only forwards calls to another phone number if you are currently in an ongoing call	1. Pick up the telephone and dial <b>*90 phone number to forward to#</b> 2. The confirmation tone verifies that the feature is activated. 3. Hang up the telephone.	1. Pick up the telephone and dial <b>*900#</b> 2. The confirmation tone verifies that the feature is deactivated. 3. Hang up the telephone.
<b>No Answer Call Forwarding</b> Only forwards calls to another phone number if the telephone is not answered	1. Pick up the telephone and dial <b>*92 phone number to forward to#</b> 2. The confirmation tone verifies that the feature is activated. 3. Hang up the telephone.	1. Pick up the telephone and dial <b>*920#</b> 2. The confirmation tone verifies that the feature is deactivated. 3. Hang up the telephone.

# Troubleshooting

This chapter provides solutions to problems that can occur during the setup and configuration of the DWR-920V U.S. Cellular Home Phone. Read the following descriptions if you are having problems.

## **What kind of phone do I need to use with the DWR-920V U.S. Cellular Home Phone?**

Most standard touch-tone phones may be used. Rotary phones are not supported. Cordless phone systems provide the most flexibility and allow you to easily place additional handsets throughout your home. Cordless phone systems still need to be plugged into a power outlet. During a power outage, a standard corded phone which does not require electrical power is recommended.

## **How do I reset my DWR-920V U.S. Cellular Home Phone to factory default settings?**

If you cannot remember your administrator password, unfold a paperclip and use it to press and hold the recessed reset button on the bottom of the device for about 10 seconds. Resetting the device to factory default settings will erase the current configuration.

## **Will my DWR-920V U.S. Cellular Home Phone work in areas with no or low wireless signal strength?**

A strong wireless signal (full signal bars) is recommended for optimal performance. A moderate signal (two signal bars) may be sufficient. It is recommended that you find a location with a strong wireless signal (full signal bars) for your device.

## **Does 911 work on this device?**

Yes, the U.S. Cellular Home Phone is Enhanced 911 (E911) compatible. As the device is intended for indoor use, please be prepared to provide your location inside the premises to public service personnel when you dial 911.

# Technical Specifications

## LTE Mode

- Supports LTE Band 2/4/5/12/66

## Antenna

- 2x2 MIMO
- External 3G/4G antenna

## Ports

- 1 x FxS (RJ-11)
- 1 x 10/100/1000 Mbps LAN (RJ-45) for GUI Management interface

## USIM Slot

- Standard 6-pin SIM card interface

## LED Status Indicators

- Power
- Voicemail
- SMS
- Telephone
- Signal Strength

## Power Input

- DC 12V 1A power adapter and power bank

## Dimensions

- 121.0 x 117.3 x 43.5 mm (L x W x H)

## Weight

- 205 g

## Operating Temperature

- 0 to 40 °C (32 to 147 °F)

## Operating Humidity

- 10% to 90% (Non-condensing)

## Certification

- RoHS
- FCC



# Regulatory Information

## **Federal Communication Commission Interference Statement**

This equipment has been tested and found to comply with the limits for a Class B digital device, pursuant to Part 15 of the FCC Rules. These limits are designed to provide reasonable protection against harmful interference in a residential installation. This equipment generates, uses and can radiate radio frequency energy and, if not installed and used in accordance with the instructions, may cause harmful interference to radio communications. However, there is no guarantee that interference will not occur in a particular installation. If this equipment does cause harmful interference to radio or television reception, which can be determined by turning the equipment off and on, the user is encouraged to try to correct the interference by one of the following measures:

- Reorient or relocate the receiving antenna.
- Increase the separation between the equipment and receiver.
- Connect the equipment into an outlet on a circuit different from that to which the receiver is connected.
- Consult the dealer or an experienced radio/TV technician for help.

## **Non-modifications Statement:**

Any changes or modifications not expressly approved by the party responsible for compliance could void the user's authority to operate this equipment.

## **Caution:**

This device complies with Part 15 of the FCC Rules. Operation is subject to the following two conditions:

- (1) This device may not cause harmful interference, and
- (2) this device must accept any interference received, including interference that may cause undesired operation.