

Quick Start

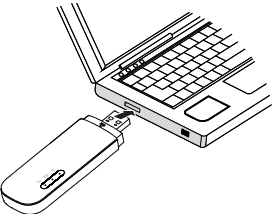
Thank you for choosing the 4G Dongle with mobile Wifi. The 4G Dongle with mobile Wifi allows you to access high speed mobile broadband.

Note:

This guide briefly describes the appearance of the 4G Dongle with mobile Wifi and the procedures for using the 4G Dongle with mobile Wifi. For details about how to set the management parameters, see help information on the web management page.

Connection Scenarios

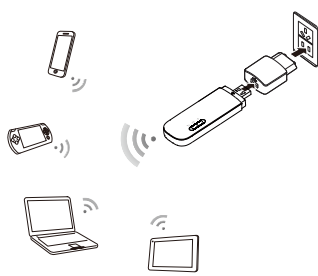
Scenario 1: One-device Internet access using computer



Scenario 2: Multi-device Internet access using Wi-Fi (connected to a computer)

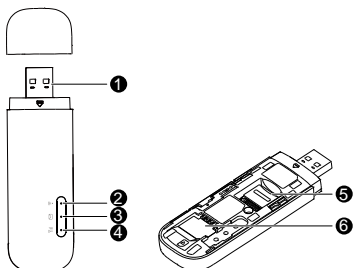


Scenario 3: Multi-device Internet access using Wi-Fi (connected to a power adapter)



Getting to Know Your 4G Dongle with mobile Wifi

The following figure shows the 4G Dongle with mobile Wifi. It is provided only for your reference. The actual product may be different.



① USB connector

Connects the 4G Dongle with mobile Wifi to a computer or other suitable USB power source.

② Wi-Fi indicator

Indicates the status of the Wi-Fi network.

- Steady green: The Wi-Fi function is turned on.
- Off: The Wi-Fi function is turned off or fails, or the 4G Dongle with mobile Wifi has been removed.

③ SMS indicator

Indicates the status of an SMS.

- Steady green: There are unread messages in your inbox.
- Blinking green once every 2s: The message storage is full.
- Off: The 4G Dongle with mobile Wifi is powered off, there are no unread messages.

④ 2G/3G/4G indicator

Indicates the 4G Dongle with mobile Wifi's status.

- Blinking green twice every 2s: The 4G Dongle with mobile Wifi is powered on.
- Blinking green once every 0.2s: The software of the 4G Dongle with mobile Wifi is being upgraded.
- Blinking green once every 2s: The 4G Dongle with mobile Wifi is registered with a 2G network.
- Steady green: The 4G Dongle with mobile Wifi is connected to a 2G network.
- Blinking blue once every 2s: The 4G Dongle with mobile Wifi is registered with a 3G network.
- Steady blue: The 4G Dongle with mobile Wifi is connected to a 3G network.
- Blinking cyan once every 2s: The 4G Dongle with mobile Wifi is registered with an 4G network.
- Steady cyan: The 4G Dongle with mobile Wifi is connected to a 3G+/4G network.
- Off: The 4G Dongle with mobile Wifi is removed.

⑤ microSD card slot

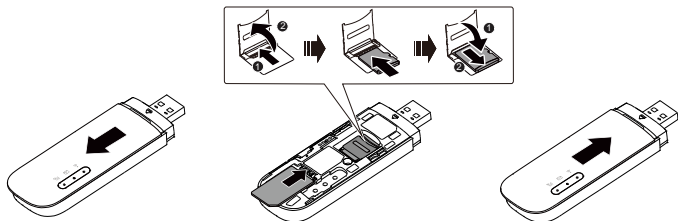
Holds an optional microSD memory card.

⑥ SIM card slot

Holds a SIM (Subscriber Identity Module) card.

Getting Started

1. Slide the cover to remove it from the 4G Dongle with mobile Wifi.
2. Insert the SIM card into the corresponding card slots, as shown in the following figure.
3. You can insert a microSD card to add USB memory stick functions to your dongle.
4. Replace the cover and slide it into place.



Note:

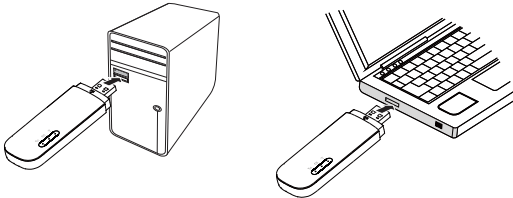
- The microSD card is an optional accessory. If it is not provided in the package, you can buy one yourself.
- Ensure that the beveled edge of the SIM card is properly aligned with that of the SIM card slot and the microSD card is inserted according to the direction as labeled on the microSD card slot.
- Do not remove the microSD or SIM card when the card is in use. Otherwise, the card as well as your 4G Dongle with mobile Wifi may get damaged and the data stored on the card may be corrupted.
- Do not use any SIM card that is not standard or is incompatible with the 4G Dongle with mobile Wifi. Otherwise, the card as well as your 4G Dongle with mobile Wifi may get damaged and the data stored on the card may be corrupted.

Using Your 4G Dongle with mobile Wifi

The procedure for installing the management program depends on your computer's operating system. The following sections are based on Microsoft™ Windows 7. The procedure is similar for Apple Macintosh™ computers.

Connecting to a Network

1. Connect the 4G Dongle with mobile Wifi to one of your computer's USB ports.



The installation wizard runs automatically.

2. When the installation is complete, the 4G Dongle with mobile Wifi's web management page is displayed and the 4G Dongle with mobile Wifi connects to the network automatically.

Note:

- If the installation wizard does not run automatically, find the **AutoRun.exe** file in the driver path, and double-click the file to run it.
- The default user name and password of the web management page are **admin**.
- If your SIM card's personal identification number (PIN) verification function is enabled, log in to the web management page, and enter and save the PIN.
- If you are not using the default access point name (APN), log in to the web management page, and configure and save the APN settings on the dial-up settings tab.
- When using the 4G Dongle with mobile Wifi to access a network, do not use other devices to access the network, because doing so may cause conflicts.
- If you are not connected to the network, access <http://192.168.3.1> to check the device status.
- If you cannot access <http://192.168.3.1>, disconnect other network connections, such as an Ethernet or Wireless Fidelity (Wi-Fi) connection, remove and then insert the 4G Dongle with mobile Wifi, or restart the computer.

Disconnecting from a Network

Remove the 4G Dongle with mobile Wifi from your computer.

Note:

- By default, the 4G Dongle with mobile Wifi automatically disconnects from the network if no data is transferred within 10 minutes.
- If you do not need to connect to the network, it is recommended that you remove the 4G Dongle with mobile Wifi from your computer to reduce data traffic.
- Disconnect the 4G Dongle with mobile Wifi's data connection through its web management page or the HUAWEI HiLink application. Before you remove the 4G Dongle with mobile Wifi, make sure that the data connection has been disconnected.

Setting Up a Wi-Fi Connection

1. Ensure that the 4G Dongle with mobile Wifi's Wi-Fi function is on.
2. Select **Start > Control Panel > Network and Internet > Network and Sharing Center > Connect to a network**.

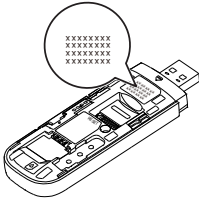
Note:

Before establishing a Wi-Fi connection, ensure that the computer is equipped with a wireless network adapter. If the computer indicates a wireless network connection, the wireless network adapter can be used. Otherwise, verify that your wireless network adapter is working properly.

3. Select the wireless network connection with the 4G Dongle with mobile Wifi's SSID and click **Connect**.

Note:

- If a security mechanism is enabled for the wireless network connection, enter the correct network key.
- The SSID and the network key are printed on the 4G Dongle with mobile Wifi, as shown in the following figure.



4. Wait until a wireless network connection icon is displayed in the lower right corner of the computer screen. A wireless network connection is set up.

Accessing the Internet

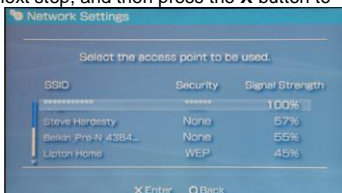
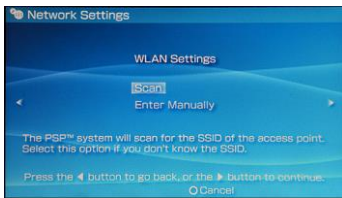
You can access the Internet after a connection between your 4G Dongle with mobile Wifi and Wi-Fi device is set up.

Note:

By default, the 4G Dongle with mobile Wifi automatically disconnects from the Internet when you are roaming.

Example 1: Connecting to a Game Console (for example, PSP) through Wi-Fi

1. On the PSP, turn on the WLAN.
2. Choose **Settings > Network Settings**.
3. Select **Infrastructure Mode**.
4. Select **New Connection**, and enter the connection name.
5. Select **Scan** to search for wireless networks. A list of access points will be displayed on the screen.
6. Select the access point with the 4G Dongle with mobile Wifi's SSID, and press the ► button on the PSP. Confirm the SSID, and enter the correct wireless network encryption key.
7. Press the ► button to proceed to the next step, and then press the X button to save settings.
8. Select **Test Connection** to test whether the network connection is successful.
9. You can now open the browser and access the network.



Example 2: Connecting to a Tablet Computer (for example, iPad) through Wi-Fi

1. Touch **Settings > WLAN** to turn on WLAN.
2. The tablet computer automatically searches for wireless connections and displays a list of access points.
3. Select the access point with the 4G Dongle with mobile Wifi's SSID.
4. If required, enter the correct wireless network encryption key, and tap **Join**.
(The lock icon indicates that the encryption key is required to connect to this wireless network.)



Note:

Wi-Fi devices, such as an iPhone, iPod touch, PS3 and NDSi, can all access the Internet through the 4G Dongle with mobile Wifi. For specific operations, refer to the Wi-Fi device's user manual.

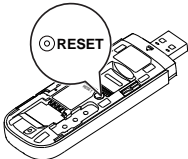
Viewing Service Information

Visit <http://192.168.3.1> to view your service information. Refer to the "Getting Started with your O2 Dongle with Mobile Wifi" booklet in the box for more information about your mobile broadband service.

Restoring Factory Defaults

If you are uncertain of which settings you have configured or changed, you can restore the factory defaults that come with the 4G Dongle with mobile Wifi, and reconfigure the device.

To restore the factory defaults, connect the 4G Dongle with mobile Wifi to a computer or a power outlet, and press and hold the RESET button for 2 seconds.



Note:

Restoring factory defaults deletes all the device's user-defined settings and restores all the settings on the web management page to their defaults.