

SM-B550H user manual

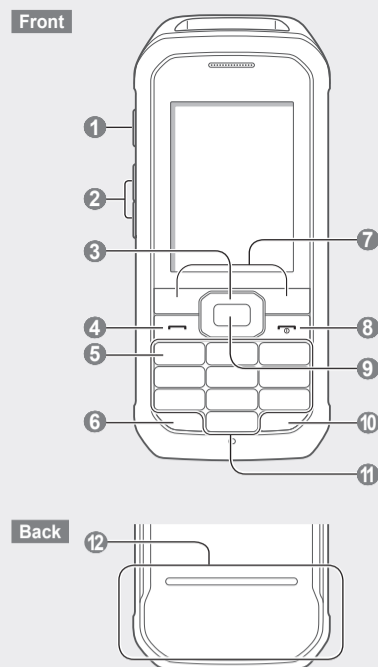
- Some content may differ from your device depending on the region or service provider.
- Third party services may be terminated or interrupted at any time, and Samsung makes no representation or warranty that any content or service will remain available for any period of time.
- This product includes certain free/open source software. The exact terms of the licences, disclaimers, acknowledgements and notices are available on the Samsung's website opensource.samsung.com.

www.samsung.com



Printed in Korea
GH68-43607A Rev.1.1
English (EU), 04/2015

Device layout



- Torch light button**
Activate or deactivate the torch
See "Using the torch"
- Volume button**
From the Home screen, adjust the device's volume; Send an SOS message
- Navigation button**
From the Home screen, scroll through widgets
In the Menu screen, scroll through menu options
- Dial button**
Make or answer a call; From the Home screen, retrieve recently dialed, missed, or received numbers
- Voicemail button**
From the Home screen, access voicemails (press and hold)
- Keypad lock button**
From the Home screen, lock or unlock the keypad (press and hold)
- Softkeys**
Perform actions indicated at the bottom of the display
- Power button**
Turn the device on or off (press and hold); End a call; In the Menu screen, cancel an input and return to the Home screen
- Confirm button**
In the Menu screen, select the highlighted menu option, or confirm an input
The key might perform differently, depending on the region
- Silent mode button**
From the Home screen, activate or deactivate the silent mode (press and hold)
- Alphanumeric buttons**
- Internal antenna**
Do not cover the antenna area with your hands or other objects. This may cause connectivity problems or drain the battery

The device displays the following status indicators at the top of the screen:

Icon	Description	Icon	Description
	No SIM card		SOS message feature activated
	No signal		Normal profile activated
	Signal strength		Silent profile activated
	Network searching		Connected to computer
	GPRS network connected		Bluetooth feature activated
	EDGE network connected		Alarm activated
	UMTS network connected		Earphone inserted
	HSDPA network connected		Music playback in progress
	Battery power level		Music playback paused
	Call in progress		FM radio on
	Call diverting activated		Roaming (outside of normal service area)
	New text message (SMS)		Memory card inserted
	New multimedia message (MMS)		Flight mode
	New voice mail message		Current time
	New push message		

Charging the battery



To electric socket

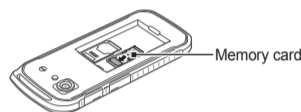
- Plug the small end of the charger into the multipurpose jack of the device, and plug the large end of the charger into an electric socket.
- After fully charging, disconnect the device from the charger. First unplug the charger from the device, and then unplug it from the electric socket.

- Use only Samsung-approved chargers, batteries, and cables. Unapproved chargers or cables can cause battery to explode or damage the device.
- Do not remove the battery before removing the charger. This may damage the device.

- To save energy, unplug the charger when not in use. The charger does not have a power switch, so you must unplug the charger from the electric socket when not in use to avoid wasting power. The charger should remain close to the electric socket and easily accessible while charging.

Insert a memory card (optional)

The device accepts memory cards with maximum capacities of 16 GB. Depending on the memory card manufacturer and type, some memory cards may not be compatible with the device.



Memory card

Insert the memory card as shown in the drawing.

- Formatting the memory card on a computer might cause incompatibility with your device. Format the memory card only on the device.
- Frequent writing and erasing of data will shorten the lifespan of memory cards.
- Do not use sharp tools to remove the memory card from the device.

Turning the device on or off

Turning the device on

Press and hold [Power], and then enter the PIN and press <OK>, if necessary.

Turning the device off

Press and hold [Power].

- If the battery is fully discharged or removed from the device, the time and date will be reset.

Accessing menus

To access the device's menus or options,

Navigation button	Scroll to each menu.
Confirm button	Launch a menu or an application.
<Menu>	Open the Menu screen.
<Back>	Return to the previous screen.
[Power]	Close the menu or application and return to the Home screen.

- When you access a menu requiring the PIN2, you must enter the PIN2 supplied by the SIM card. For details, contact your service provider.
- Samsung is not responsible for any loss of passwords or private information or other damage caused by illegal software.

Entering text

Changing the text input mode

Press [#]	Change to uppercase, lowercase, or switch to number mode.
Press and hold [#]	Switch between T9 and ABC mode. Depending on the region, users might be able to use an input mode for specific language.
Press [*]	Switch to symbol mode.
Press and hold [*]	Select an input mode, change the input language, or select words in word list.

T9 mode

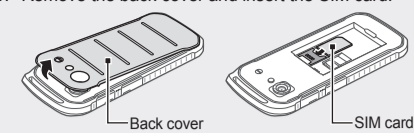
- Press the appropriate alphanumeric buttons to enter an entire word.
- When the word displays correctly, press [0] to insert a space. If the word does not display, press the Navigation button up or down to select an alternate word.

ABC mode

Press an appropriate alphanumeric button until the character appears on the display.

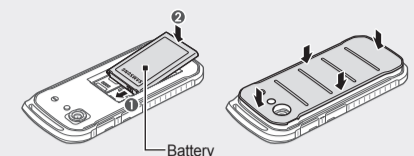
Installing the SIM card and battery

- Remove the back cover and insert the SIM card.



- Do not bend or twist the back cover excessively. Doing so may damage the cover.

- Insert the battery and replace the back cover.



- Ensure that the back cover is completely closed to avoid water damage.

Number mode

Press an appropriate alphanumeric button to enter a number.

Symbol mode

Press an appropriate alphanumeric button to enter a symbol.

Other features for text input

Press the Navigation button	Move the cursor.
Press <Clear>	Delete characters one by one.
Press and hold <Clear>	Delete characters quickly.
Press [0]	Insert a space. Press three times to change the line.
Press [1]	Enter punctuation marks.

Making or answering a call

- To make a call, enter a phone number and press [Call].
- To end a call, press [End call].
- To call a recently dialled number, press [Redial] to select a number, and press [Redial] again to dial the number.
- To make a call using the phonebook, press <Menu> → <Contacts>, select a contact and press [Call].
- To answer an incoming call, press [Call].

Sending and viewing messages

<Menu> → Messages

Sending messages

- Press **Create message**.
- Enter a contact number or press **Add** to open the phonebook.
- Select a contact and press **Add**.
- Scroll down and enter a text message.
See "Entering text".
- To attach files with the message, press <Options> → **Add multimedia** and take photos or select files.
- Press **Send**.

Viewing messages

Press **Inbox** and select a message to read.

Managing contacts

Save data, such as names, phone numbers and personal information in the device memory or SIM card.

<Menu> → Contacts

- Users can change the memory location by pressing <Menu> → <Contacts> → <Options> → **Settings** → **Save new contact to** and selecting a memory location.

Adding new contacts

- Press <Options> → **Create contact** → a memory location (if necessary).
- Select a number type (if necessary).
- Enter contact information and press the Confirm button.

Editing contacts

- Select a contact and press the Confirm button.
- Edit items and press the Confirm button to save.

Deleting contacts

Select a contact and press <Options> → **Delete**.

Using the camera

<Menu> → Camera

Taking photos

- Rotate the device anti-clockwise to landscape view. Or, press [8] to change between landscape and portrait view.
- Aim the lens at the subject and make any adjustments by pressing <Options>.
- Press the Confirm button to take a photo. Photos are saved automatically.

Recording videos

- Press <Options> → **Camcorder**. Or, press [1] to change from **Camera** to **Camcorder**.
- Rotate the device anti-clockwise to landscape view.
- Aim the lens at the subject and make any adjustments by pressing <Options>.
- Press the Confirm button to start recording.
- Press [Stop] to end recording. Videos are saved automatically.

Viewing photos and videos

From the Home screen, press <Menu> → **My Files** → **Images** or **Videos** and select an item to view.

Listening to music

<Menu> → Music

Buttons	Function
Confirm button	Play, pause, or resume music.
Navigation button	<ul style="list-style-type: none"> Left: Skip backwards (press); Scan backwards in a file (press and hold). Right: Skip forwards (press); Scan forwards in a file (press and hold). Up: Open the playlist. Down: Change the repeat mode.
1	Rate the current track.
2	Change the sound effect.
3	Change the music display.
4	Change the repeat mode.
5	Turn shuffle mode on or off.

Browsing the web

<Menu> → Opera Mini

- When users access **Opera Mini** for the first time, users might be prompted to create an Internet profile.

Navigating webpages

Buttons	Function
Navigation button	Scroll up or down on a webpage.
Confirm button	Select an item.
<Back>	Return to the previous page.
<Menu>	Open browser options.

Bookmarking webpages

- Open a webpage to bookmark.
- Press <Menu> → Select [Down arrow] for drop-down list.
- Select **Bookmarks** → <Add>.
- Enter details and press <Save>.

Using the alarm

<Menu> → Alarms

Setting alarms

- Press <Create>.
- Enter details and press <Save>.

Stopping alarms

When an alarm rings,

- Press <Confirm> to stop the alarm.
- Press <Snooze> to silence the alarm for the snooze period.

Deleting alarms

Select an item and press <Options> → **Delete**.

Deactivating alarms

Select an item and press <Options> → **Deactivate alarm**.

Managing calendar

<Menu> → Calendar

Creating events

- Press <Options> → **Create** and select an event type.
- Enter details of the event and press <Save>.

Viewing events

Select a date and press the Confirm button. To change the calendar view, press <Options> → **Week view** or **Month view**.

Listening to the FM radio

<Menu> → FM Radio

Activating the FM radio

- Plug a headset into the device.
- Press the Confirm button to turn on the FM radio.
- Press <Yes> to start automatic tuning. Users may be asked to start automatic tuning when accessing the FM radio for the first time.
- Control the FM radio using the following buttons:

Buttons	Function
Confirm button	Turn the FM radio on or off.
Navigation button	Left/Right: Fine-tune the frequency; Search for the next available station (press and hold).

Adding radio stations to the favourites list

- Plug a headset into the device.
- Press <Options> → **Add to** → **Favourites**.
- Assign a button and press <Select>.

Using the Bluetooth feature

<Menu> → Bluetooth

Turning on the Bluetooth feature

- Press <Options> → **Settings** and set **Bluetooth to On**.
- Set **My phone's visibility** to allow other devices to search for the device.

Finding and pairing with other Bluetooth devices

- Press the Confirm button to find other Bluetooth devices.
- Select a device and press the Confirm button.
- Press <Yes> to match the PIN between the devices.
- When the other device accepts the connection, pairing is complete.

- Users might have to enter a PIN, depending on the device.

Turning off the Bluetooth feature

Select <Options> → **Settings** and set **Bluetooth** to **Off**.

Sending data using the Bluetooth feature

- Select items to send from one of the device's applications.
- Press <Options> → **Send via** → **Bluetooth**.

Customising the device

Settings control how applications and functions operate. Change them to customise the device. Appearances, sound profiles, call actions, and many more can be customised.

<Menu> → Settings

Menu	Description
Profiles	Change the alert type, ringtone, volume, etc.
Display	Alter wallpaper, theme, brightness, etc.
Time and date	Change the time and date of the device.
Phone	Change the device language, etc.
Call	Set auto reject, answering mode, call forwarding, fake call, etc.
Backup manager	Back up or restore data.
Security	Set locks or change passwords.
PC connections	Set connection settings with a computer.
Network	Change network profiles settings.
Ultra power saving	Activate or deactivate ultra power saving mode.

Menu	Description
	
Memory	Clear memory, check memory status, manage the memory card, or set the default memory location.
Reset	Reset the device.

Adjusting the sound profiles

- <Menu> → **Settings** → **Profiles**
- To switch to another profile, select it from the list.


Changing the ringtone

- Select a profile and press **<Edit>**.
- Press **Voice call ringtone**.
- Select a ringtone and press the Confirm button.

Changing the message alert tone

- Select a profile and press **<Edit>**.
- Press **Message alert tone**.
- Select a tone and press the Confirm button.

Safety information

 <p>www.sar-tick.com</p>	<p>This product meets applicable national SAR limits of 2.0 W/kg. The specific maximum SAR values can be found in the SAR information section of this manual.</p> <p>When carrying the product or using it while worn on your body, maintain a distance of 1.5 cm from the body to ensure compliance with RF exposure requirements.</p>
Trademarks	<ul style="list-style-type: none">SAMSUNG and the SAMSUNG logo are registered trademarks of Samsung Electronics. Bluetooth® is a registered trademark of the Bluetooth SIG, Inc. worldwide. All other trademarks and copyrights are the property of their respective owners.

Please read this important safety information before you use the device. It contains general safety information for devices and may include content that does not apply to your device. Follow the warning and caution information to prevent injury to yourself or others and to prevent damage to your device.

- The term 'device' refers to the product and its battery, charger, the items supplied with the product, and any Samsung-approved accessories used with the product.

Warnings	<ul style="list-style-type: none">Do not use the device while it is charging or touch your device with wet hands
Precautions	<ul style="list-style-type: none">Do not use the device in areas with high concentrations of dust or airborne materials
Use caution when exposed to flashing lights	<ul style="list-style-type: none">While using your device, leave some lights on in the room and do not hold the screen too close to your eyes.
Use caution when using the device while walking or moving	<ul style="list-style-type: none">Always be aware of your surroundings to avoid injury to yourself or others.
Use caution when exposed to flashing lights	<ul style="list-style-type: none">Seizures or blackouts can occur when you are exposed to flashing lights while watching videos or playing Flash-based games for extended periods. If you feel any discomfort, stop using the device immediately.
Reduce the risk of repetitive motion injuries	<ul style="list-style-type: none">When you repetitively perform actions, such as pressing keys, drawing characters on a touch screen with your fingers, or playing games, you may experience occasional discomfort in your hands, neck, shoulders, or other parts of your body. When using your device for extended periods, hold the device with a relaxed grip, press the keys lightly, and take frequent breaks. If you continue to have discomfort during or after such use, stop using the device and consult a physician.
Protect your hearing and ears when using a headset	<ul style="list-style-type: none">Excessive exposure to loud sounds can cause hearing damage. Exposure to loud sounds while walking may distract your attention and cause an accident.
Ensure maximum battery and charger life	<ul style="list-style-type: none">Avoid charging your device for more than a week, as overcharging may shorten battery life. Over time, unused device will discharge and must be recharged before use. Disconnect the charger from power sources when not in use. Use the battery only for their intended purposes. Leaving batteries unused over time may reduce their lifespan and performance. It may also cause the batteries to malfunction or explode, or cause a fire. Follow all instructions in this manual to ensure the longest lifespan of your device and battery. Damages or poor performance caused by failure to follow warnings and instructions can void your manufacturer's warranty.
Correct disposal of batteries in this product	<p>(Applicable in countries with separate collection systems)</p> <p>This marking on the battery, manual or packaging indicates that the batteries in this product should not be disposed of with other household waste. Where marked, the chemical symbols Hg, Cd or Pb indicate that the battery contains mercury, cadmium or lead above the reference levels in EC Directive 2006/66. If batteries are not properly disposed of, these substances can cause harm to human health or the environment.</p> <p>To protect natural resources and to promote material reuse, please separate batteries from other types of waste and recycle them through your local, free battery return system.</p>
Declaration of Conformity	<p>Samsung Electronics declares that this device complies with the essential requirements and relevant provisions of Directive 1999/5/EC.</p> <p>Go to www.samsung.com/mobile_doc to view the Declaration of Conformity.</p>

If you notice strange smells or sounds coming from your device or the battery, or if you see smoke or liquids leaking from the device or battery, stop using the device immediately and take it to a Samsung Service Centre

Failure to do so may result in fire or explosion.

Comply with all safety warnings and regulations regarding mobile device usage while operating a vehicle

While driving, safely operating the vehicle is your first responsibility. Never use your mobile device while driving, if it is prohibited by law. For your safety and the safety of others, use your common sense and remember the following tips:

- Get to know your device and its convenience features, such as speed dial and redial. These features help you reduce the time needed to place or receive calls on your mobile device.
- Position your device within easy reach. Make sure you can access your wireless device without taking your eyes off the road. If you receive an incoming call at an inconvenient time, let your voicemail answer it for you.
- Suspend calls in heavy traffic or hazardous weather conditions. Rain, sleet, snow, ice, and heavy traffic can be hazardous.
- Do not take notes or look up phone numbers. Jotting down a "to do" list or flipping through your address book takes attention away from your primary responsibility of driving safely.
- Dial sensitly and assess the traffic. Place calls when you are not moving or before pulling into traffic. Try to plan calls when your car will be stationary.
- Do not engage in stressful or emotional conversations that may be distracting. Make the person you are talking to aware that you are driving and suspend conversations that could potentially divert your attention from the road.

Care and use your device properly

Keep your device dry

- Humidity and liquids may damage the parts or electronic circuits in your device.
- Do not turn on your device if it is wet. If your device is already on, turn it off and remove the battery immediately (if the device will not turn off or you cannot remove the battery, leave it as-is). Then, dry the device with a towel and take it to a service centre.

Warnings	<ul style="list-style-type: none">Do not use the device while it is charging or touch your device with wet hands
Precautions	<ul style="list-style-type: none">Do not use the device in areas with high concentrations of dust or airborne materials
Use caution when exposed to flashing lights	<ul style="list-style-type: none">While using your device, leave some lights on in the room and do not hold the screen too close to your eyes.
Use caution when using the device while walking or moving	<ul style="list-style-type: none">Always be aware of your surroundings to avoid injury to yourself or others.
Use caution when exposed to flashing lights	<ul style="list-style-type: none">Seizures or blackouts can occur when you are exposed to flashing lights while watching videos or playing Flash-based games for extended periods. If you feel any discomfort, stop using the device immediately.
Reduce the risk of repetitive motion injuries	<ul style="list-style-type: none">When you repetitively perform actions, such as pressing keys, drawing characters on a touch screen with your fingers, or playing games, you may experience occasional discomfort in your hands, neck, shoulders, or other parts of your body. When using your device for extended periods, hold the device with a relaxed grip, press the keys lightly, and take frequent breaks. If you continue to have discomfort during or after such use, stop using the device and consult a physician.
Protect your hearing and ears when using a headset	<ul style="list-style-type: none">Excessive exposure to loud sounds can cause hearing damage. Exposure to loud sounds while walking may distract your attention and cause an accident.
Ensure maximum battery and charger life	<ul style="list-style-type: none">Avoid charging your device for more than a week, as overcharging may shorten battery life. Over time, unused device will discharge and must be recharged before use. Disconnect the charger from power sources when not in use. Use the battery only for their intended purposes. Leaving batteries unused over time may reduce their lifespan and performance. It may also cause the batteries to malfunction or explode, or cause a fire. Follow all instructions in this manual to ensure the longest lifespan of your device and battery. Damages or poor performance caused by failure to follow warnings and instructions can void your manufacturer's warranty.
Correct disposal of batteries in this product	<p>(Applicable in countries with separate collection systems)</p> <p>This marking on the battery, manual or packaging indicates that the batteries in this product should not be disposed of with other household waste. Where marked, the chemical symbols Hg, Cd or Pb indicate that the battery contains mercury, cadmium or lead above the reference levels in EC Directive 2006/66. If batteries are not properly disposed of, these substances can cause harm to human health or the environment.</p> <p>To protect natural resources and to promote material reuse, please separate batteries from other types of waste and recycle them through your local, free battery return system.</p>
Declaration of Conformity	<p>Samsung Electronics declares that this device complies with the essential requirements and relevant provisions of Directive 1999/5/EC.</p> <p>Go to www.samsung.com/mobile_doc to view the Declaration of Conformity.</p>

- Do not touch gold-coloured contacts or terminals with your fingers or metal objects. If dirty, wipe the card with a soft cloth.
- Inserting a card or connecting a cable by force or improperly may result in damage to the multipurpose jack or other parts of the device.

Ensure access to emergency services

Emergency calls from your device may not be possible in some areas or circumstances. Before travelling in remote or undeveloped areas, plan an alternative method of contacting emergency services personnel.

Protect your personal data and prevent leakage or misuse of sensitive information

- While using your device, be sure to back up important data. Samsung is not responsible for the loss of any data.
- When disposing of your device, back up all data and then reset your device to prevent misuse of your personal information.
- Carefully read the permissions screen when downloading applications. Be particularly cautious with applications that have access to many functions or to a significant amount of your personal information.
- Check your accounts regularly for unapproved or suspicious use. If you find any sign of misuse of your personal information, contact your service provider to delete or change your account information.
- In the event your device is lost or stolen, change the passwords on your accounts to protect your personal information.
- Avoid using applications from unknown sources and lock your device with a pattern, password, or PIN.

Do not distribute copyright-protected material

Do not distribute copyright-protected material without the permission of the content owners. Doing this may violate copyright laws. The manufacturer is not liable for any legal issues caused by the user's illegal use of copyrighted material.

Adjusting the volume of the ringtone

- Select a profile and press **<Edit>**.
- Press **Volume** → **Call alert**.
- Adjust the volume and press **<Save>**.

Adjusting the volume of voice during a call

While a call is in progress, press the Volume or Navigation button up or down to adjust the volume.

Backing up data

Back up data, such as contacts, messages, calendar, and tasks to the memory card. To use this feature, a memory card must be installed.

- <Menu> → **Settings** → **Backup manager**

Backing up data

Press **Backup**, select items to back up and press **<Backup>**.

Restoring data

Press **Restore**, select items to restore and press **<Restore>**.

Using the torch

- Press and hold the Torch light button to activate the torch.
- Press the Torch light button to deactivate the torch.

Using widgets

Use widgets to perform specific tasks for applications such as contacts, calendar, and many more.

Launching widgets

From the Home screen, scroll left or right to see another panel and select a widget.

Organising widgets

- From the Home screen, select at the top right corner of the screen.
- Select a widget for each panel and press **<Options>** → **Add**.

- Some widgets require connection to web services. Selecting a web-based widget might incur additional charges.
- Available widgets might vary, depending on the region or service provider.

Using the SOS message feature

Send SOS messages to family or friends in an emergency.

- <Menu> → **Messages** → **Settings** → **SOS messages**

Activating the SOS message feature

- Press **Sending options** → **<Change>** and set **Sending SOS** to **On**.
- Enter recipient and press the Confirm button.
- Set the number of times to repeat the message.
- Edit the SOS message (if necessary).
- Press **<Back>** → **<Yes>**.

Sending SOS messages

- With the keypad locked, press the Volume button four times to send an SOS message to preset numbers.
- To exit SOS mode, press [].

Prevent the multipurpose jack and the small end of the charger from contact with conductive materials, such as liquids, dust, metal powders, and pencil leads

Conductive materials may cause a short circuit or corrosion of the terminals, which may result in an explosion or fire.

- Do not bite or suck the device or the battery**
 - Doing so may damage the device or result in an explosion or fire.
 - Children or animals can choke on small parts.
 - If children use the device, make sure that they use the device properly.

Do not insert the device or supplied accessories into the eyes, ears, or mouth

Doing so may cause suffocation or serious injuries.

Do not handle a damaged or leaking Lithium Ion (Li-Ion) battery

For safe disposal of your Li-Ion battery, contact your nearest authorised service centre.

Caution

Failure to comply with safety cautions and regulations can cause injury or property damage

Do not use your device near other electronic devices

- Most electronic devices use radio frequency signals. Your device may interfere with other electronic devices.

- Using an LTE data connection may cause interference with other devices, such as audio equipment and telephones.

Do not use your device in a hospital, on an aircraft, or in an automotive equipment that can be interfered with by radio frequency

- Avoid using your device within a 15 cm range of a pacemaker, if possible, as your device can interfere with the pacemaker.

- Use caution when using the device while walking or moving**
 - Always be aware of your surroundings to avoid injury to yourself or others.
- Make sure the headset cable does not become entangled in your arms or on nearby objects.

- Do not paint or put stickers on your device**
 - Paint and stickers can clog moving parts and prevent proper operation.
- If you are allergic to paint or metal parts of the device, you may experience itching, eczema, or swelling of the skin. When this happens, stop using the device and consult your physician.

- Do not use the device if it is cracked or broken**
 - Broken glass or acrylic could cause injury to your hands and face. Take the device to a Samsung Service Centre to have it repaired.
- Install mobile devices and equipment with caution**
 - Ensure that any mobile devices or related equipment installed in your vehicle are securely mounted.
 - Avoid placing your device and accessories near or in an airbag deployment area. Improperly installed wireless equipment can cause serious injury when airbags inflate rapidly.

- Do not drop your device or cause impacts to your device**
 - Your device may be damaged or may malfunction.
 - If bent or deformed, your device may be damaged or parts may malfunction.
- Ensure maximum battery and charger life**
 - Avoid charging your device for more than a week, as overcharging may shorten battery life.
 - Over time, unused device will discharge and must be recharged before use.
 - Disconnect the charger from power sources when not in use.
 - Use the battery only for their intended purposes.
 - Leaving batteries unused over time may reduce their lifespan and performance. It may also cause the batteries to malfunction or explode, or cause a fire.
 - Follow all instructions in this manual to ensure the longest lifespan of your device and battery. Damages or poor performance caused by failure to follow warnings and instructions can void your manufacturer's warranty.

- Use caution when exposed to flashing lights**
 - While using your device, leave some lights on in the room and do not hold the screen too close to your eyes.
 - Seizures or blackouts can occur when you are exposed to flashing lights while watching videos or playing Flash-based games for extended periods. If you feel any discomfort, stop using the device immediately.
 - If anyone related to you has experienced seizures or blackouts while using a similar device, consult a physician before using the device.
 - If you feel discomfort, such as a muscle spasm, or disoriented, stop using the device immediately and consult a physician.
 - To prevent eye strain, take frequent breaks while using the device.
- Reduce the risk of repetitive motion injuries**
 - When you repetitively perform actions, such as pressing keys, drawing characters on a touch screen with your fingers, or playing games, you may experience occasional discomfort in your hands, neck, shoulders, or other parts of your body. When using your device for extended periods, hold the device with a relaxed grip, press the keys lightly, and take frequent breaks. If you continue to have discomfort during or after such use, stop using the device and consult a physician.

- Protect your hearing and ears when using a headset**
 - Excessive exposure to loud sounds can cause hearing damage.
 - Exposure to loud sounds while walking may distract your attention and cause an accident.
 - Always turn the volume down before plugging the earphones into an audio source and use only the minimum volume setting necessary to hear your conversation or music.
 - In dry environments, static electricity can build up in the headset. Avoid using headsets in dry environments or touch a metal object to discharge static electricity before connecting a headset to the device.
 - Do not use a headset while driving or riding. Doing so may distract your attention and cause an accident, or may be illegal depending on your region.

- Deactivate wireless features, such as Bluetooth, when not in use.
- If the device behaves abnormally, run an antivirus program to check for infection.
- Run an antivirus program on your device before you launch newly-downloaded applications and files.
- Install antivirus programs on your computer and run them regularly to check for infection.
- Do not edit registry settings or modify the device's operating system.

Specific Absorption Rate (SAR) certification information

THIS DEVICE MEETS INTERNATIONAL GUIDELINES FOR EXPOSURE TO RADIO WAVES

Your mobile device is a radio transmitter and receiver. It is designed not to exceed the limits for exposure to radio waves (radio frequency electromagnetic fields) recommended by international guidelines. The guidelines were developed by an independent scientific organisation (ICNIRP) and include a substantial safety margin designed to assure the safety of all persons, regardless of age and health.

The radio wave exposure guidelines use a unit of measurement known as the Specific Absorption Rate, or SAR. The SAR limit for mobile devices is 2.0 W/kg.

Tests for SAR are conducted using standard operating positions with the device transmitting at its highest certified power level in all tested frequency bands. The highest SAR values under the ICNIRP guidelines for this device model are:

Maximum SAR for this model and conditions under which it was recorded	
Head SAR	0.784 W/kg
Body-worn SAR	0.439 W/kg

Warning

Failure to comply with safety warnings and regulations can cause serious injury or death

Do not use damaged power cords or plugs, or loose electrical sockets

Unsecured connections can cause electric shock or fire.

Do not touch the power cord with wet hands or disconnect the charger by pulling the cord

Doing so may result in electrocution.

Do not bend or damage the power cord

Doing so may cause electric shock or fire.

Do not use your device while it is charging or touch your device with wet hands

Doing so may cause electric shock.

Do not short-circuit the charger or the device

Doing so may cause electric shock or fire, or the battery may malfunction or explode.

Do not use your device outdoor during a thunderstorm

Doing so may result in electric shock or device malfunction.

Use manufacturer-approved batteries, chargers, accessories, and supplies

- Using generic batteries or chargers may shorten the life of your device or cause the device to malfunction. They may also cause a fire or cause the battery to explode.
- Use only Samsung-approved battery and charger specifically designed for your device. Incompatible battery and charger can cause serious injuries or damage to your device.
- Samsung cannot be responsible for the user's safety when using accessories or supplies that are not approved by Samsung.

Making fake calls

- <Menu> → **Settings** → **Call** → **Fake call**

Activating the fake call feature

- Set **Fake call hot key** to **On**.
- Change caller name or number (if necessary).

Making fake calls

- Press and hold the Navigation button down.
- With the buttons locked, press the Navigation button down four times.

- To minimise possible interference with a pacemaker, use your device only on the side of your body that is opposite the pacemaker.
- If you use medical equipment, contact the equipment manufacturer before using your device to determine whether or not the equipment will be affected by radio frequencies emitted by the device.
- On an aircraft, using electronic devices can interfere with the aircraft's electronic navigational instruments. Make sure the device is turned off during takeoff and landing. After takeoff, you can use the device in flight mode if allowed by aircraft personnel.
- Electronic devices in your car may malfunction, due to radio interference from your device. Contact the manufacturer for more information.

Do not expose the device to heavy smoke or fumes

Doing so may damage the outside of the device or cause it to malfunction.

If you use a hearing aid, contact the manufacturer for information about radio interference

The radio frequency emitted by your device may interfere with some hearing aids. Before using your device, contact the manufacturer to determine whether or not your hearing aid will be affected by radio frequencies emitted by the device.

Do not use your device near devices or apparatuses that emit radio frequencies, such as sound systems or radio towers

Radio frequencies may cause your device to malfunction.

Turn off the device in potentially explosive environments

- Turn off your device in potentially explosive environments instead of removing the battery.

- Always comply with regulations, instructions and signs in potentially explosive environments.
- Do not use your device at refuelling points (petrol stations), near fires or chemicals, or in blasting areas.
- Do not store or carry flammable liquids, gases, or explosive materials in the same compartment as the device, its parts, or accessories.

- Your device may wear out over time. Some parts and repairs are covered by the warranty within the validity period, but damages or deterioration caused by using unapproved accessories are not.

When using the device, mind the following

- Hold the device upright, as you would with a traditional phone.
- Speak directly into the microphone.

Do not disassemble, modify, or repair your device

- Any changes or modifications to your device can void your manufacturer's warranty. If your device needs servicing, take your device to a Samsung Service Centre.

- Do not disassemble or puncture the battery, as this can cause explosion or fire.

- Turn off the device before removing the battery. If you remove the battery with the device turned on, it may cause the device to malfunction.

When cleaning your device, mind the following

- Wipe your device or charger with a towel or an eraser.
- Clean the battery terminals with a cotton ball or a towel.
- Do not use chemicals or detergents. Doing so may discolour or corrode the outside the device or may result in electric shock or fire.

Do not use the device for anything other than its intended use

Your device may malfunction.

Avoid disturbing others when using the device in public

Allow only qualified personnel to service your device

Allowing unqualified personnel to service your device may result in damage to your device and will void your manufacturer's warranty.

Handle SIM cards, memory cards, or cables with care

- When inserting a card or connecting a cable to your device, make sure that the card is inserted or the cable is connected to the proper side.
- Do not remove a card while the device is transferring or accessing information, as this could result in loss of data and/or damage to the card or device.
- Protect cards from strong shocks, static electricity, and electrical noise from other devices.

Correct disposal of batteries in this product

- (Applicable in countries with separate collection systems)
- This marking on the battery, manual or packaging indicates that the batteries in this product should not be disposed of with other household waste. Where marked, the chemical symbols Hg, Cd or Pb indicate that the battery contains mercury, cadmium or lead above the reference levels in EC Directive 2006/66. If batteries are not properly disposed of, these substances can cause harm to human health or the environment.
- To protect natural resources and to promote material reuse, please separate batteries from other types of waste and recycle them through your local, free battery return system.

Declaration of Conformity
Samsung Electronics declares that this device complies with the essential requirements and relevant provisions of Directive 1999/5/EC.
Go to www.samsung.com/mobile_doc to view the Declaration of Conformity.

Declaration of Conformity
Samsung Electronics declares that this device complies with the essential requirements and relevant provisions of Directive 1999/5/EC.
Go to www.samsung.com/mobile_doc to view the Declaration of Conformity.

CE 0168